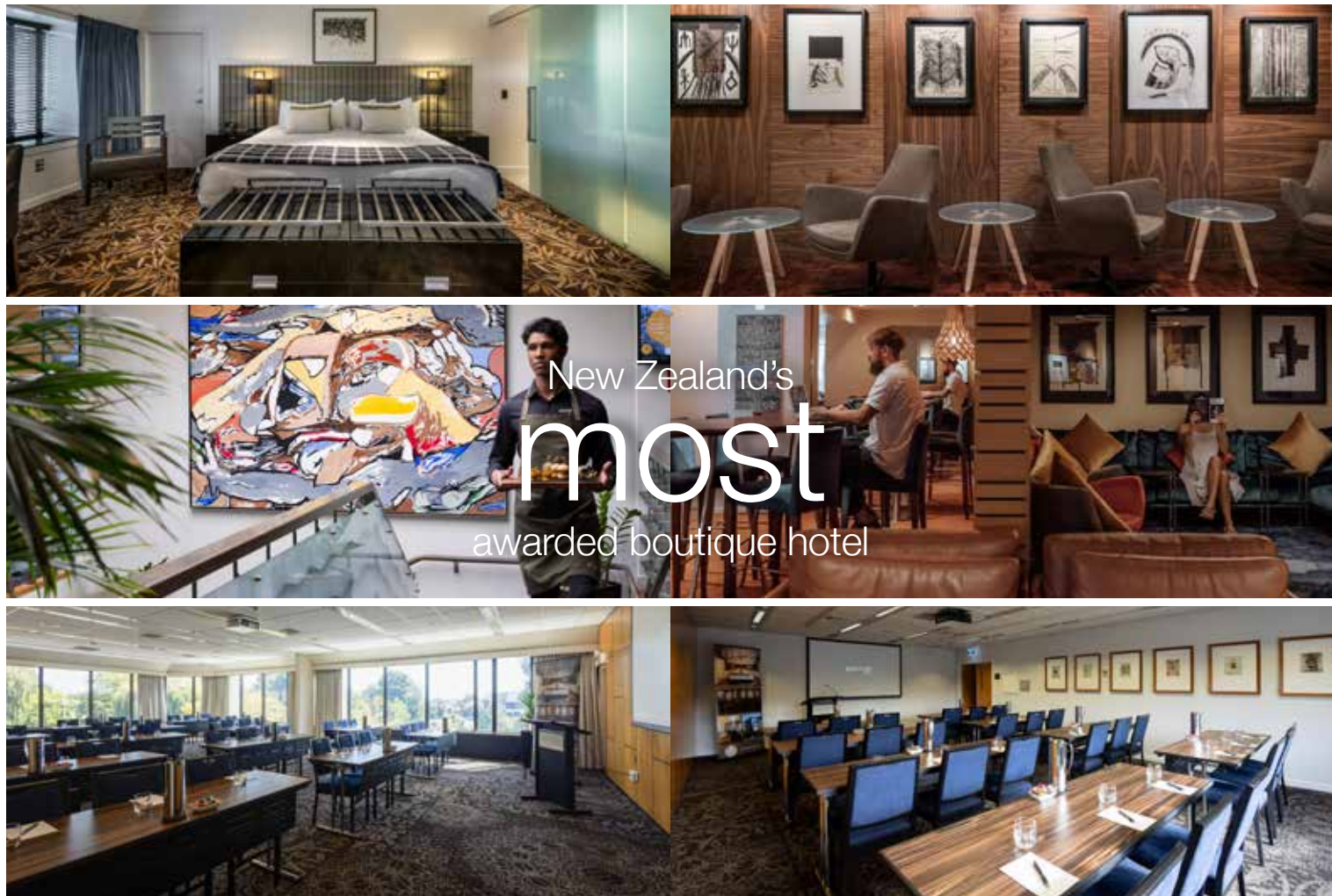


welcome

events & meetings

the george
christchurch





New Zealand's most awarded boutique hotel

The George, New Zealand's most awarded boutique hotel.

Situated only minutes from the heart of the Garden City, opposite Hagley Park and the River Avon, The George, combines luxury with attentive, friendly service. Small and elegant, this boutique hotel of 53 guest rooms offers an exceptional level of personal service throughout conference, accommodation and dining facilities.

// for a unique gathering of quality

Conference/Banqueting facilities cater for groups of 8 - 150 people, so it makes perfect sense to hold your special event at The George, Christchurch. Whatever the type or size of the event, our team will design an event to suit your needs. The hotel's six separate venues can be used for a vast array of events including cocktail parties, meetings, private dinners, presentations, seminars, conferences, wedding receptions and product launches.

// services

Among Christchurch's meeting facilities and special event venues, the six spaces at The George are each unique. Each matches award-winning cuisine with signature service and 5-star comfort. Whether it's a board meeting, a product launch, conference, private dinner, or a wedding celebration The George offers you extensive facilities, comprehensive service, excellent quality and attention to detail.

// hotel facilities

Complimentary Wi-Fi is available in all event spaces
Free off street carparking
E-Bikes available to hire
Complimentary Wi-Fi
Gym facility on-site
53 accommodation rooms
6 event spaces
1 on-site restaurant
1 lounge bar

the george
christchurch





restaurants



Inspired | Sustainable | Relaxed

A modern 'neo-bistro' serving breakfast, lunch, high tea and dinner. Our menus are constantly evolving governed by the season's bounty and the best Canterbury produce available. 50 Bistro is located on the ground floor of The George at the convergence of Park Terrace and Peterborough Street.

50 Bistro spans three interconnected spaces including; a lobby bar for socialising, a light filled conservatory for warmer days and a modern sheek restaurant.

Re-awaken with a living wall for outdoor dining and a stylish indoor 'neo-bistro' restaurant serving up modern New Zealand cuisine. The Conservatory is also available for group bookings.

Lobby bar

The bar is open daily until late offering coffees, a light meal and snacks menu. Offering a variety of elegantly appointed zones the lobby bar showcases some of The George's contemporary New Zealand art collection and offers space to relax, to meet, connect and socialise.

In-Room Dining

Available 24 hours a day



accommodation

Located opposite Hagley Park and the River Avon the hotel offers 53 accommodation rooms and suites. The George offers a range of room types and configurations including wheelchair accessible rooms, twin, double, king and californian king beds.

The George, Christchurch's luxury boutique hotel, is the essence of supreme comfort.

All rooms have opening windows.

executive rooms (8)

Average size: 29.3 m², this lead in room type provides everything for a memorable visit in contemporary and elegant and comfortable accommodation. Four of our executive rooms are accessible.

premium executive rooms (32)

Average size: 29.3 m², designed by Warren and Mahoney to the highest specifications and situated on all floors, these sophisticated rooms offer the highest level of comfort allowing you to catch your breath, relax and revitalise.

junior suites (4)

Average size: 44 m², these spacious suites were designed by leading Christchurch architects Warren & Mahoney and offer additional living and bathroom space as well as full sized robes and custom made furniture.

park suites (6)

Average size: 58.9m², with captivating views over Hagley Park and the River Avon and a separate lounge area, these suites are so enchanting you may not want to leave. Designed by Warren & Mahoney your Park Suite is the jewel in The George's crown.

the residence (3)

The Residence has the feel of a country lodge overlooking The George's private hotel gardens, with access to full hotel services and the exclusivity of a private villa. Offering two suites, and a loft The Residence can be utilised as separate suites or the exclusive use of the entire villa.



venues

The George is an elegant boutique urban hotel located opposite Hagley Park and the River Avon, on the verge of the Christchurch CBD. The George offers a variety of event spaces and venues to suit any event, from private boardroom meetings to more lavish affairs. Every event is delivered in an environment of seamless elegance, matched with award-winning cuisine and professional service.

Located on Level Two is our Boardroom and Treasury while Parkview and Annex spaces are located on Level Three. All levels are accessed by lift and stairs with separate facilities on each level. The Residence at The George offers an exclusive ground floor meeting and event space with natural light, an outdoor courtyard garden and the use of the Library as an adjoining coffee break space, or for pre-dinner champagne and canapés.

// capacities

venue area	(sq.m)	U Shape	Boardroom	theatre	classroom	dining	cocktail
Parkview	109	36	30	100	51	81	150*
Parkview 1	52	21	18	40	24	36	40
Parkview 2	57	21	18	50	27	40	50
Treasury	55	28	24	50	27	36	50
Boardroom	32	N/A	12	N/A	N/A	14	N/A
Annex	42	15	14	40	24	24	N/A
Residence	N/A	N/A	15	N/A	N/A	18	30**
Pescatore	80	24	20	50	27	40	60



venues

// parkview (parkview 1 & parkview 2 together)

Offering natural light and superb views of Hagley Park and the River Avon. Parkview is able to be split into two separate spaces. Capable of hosting 100 guests theatre style, 80 for a banquet dinner or 150 for a cocktail party, this is the largest of the venues (109 m²) at The George. Highlights include;

- Natural lighting
- Superb views
- In built sound system
- Black out drapes
- Ceiling mounted data projector & screen

// the annex

An internal room with excellent lighting, The Annex is ideal for small meetings requiring discreet surroundings or a breakout facility (42 m²) for larger groups needing multiple spaces. Highlights include;

- Inbuilt sound system
- Numerous 240v power sources
- Ceiling mounted data projector & screen

// pescatore

Located on level 2 of the hotel and offering natural light and design-led surroundings. Capable of hosting 25 guests cabaret style, 40 for a banquet dinner or 60 for a cocktail party. Highlights include;

- Natural light
- In-built sound system
- Superb views

// the boardroom

A contemporary space with sleek interior décor, The Boardroom (32 m²) is the ideal location for board meetings and executive strategy days. In the evening the Boardroom transforms into a sophisticated private dining room.

Highlights include;

- Adjoining Pescatore
- Sleek interior décor

// the treasury

The Treasury offers a venue suitable as a stand-alone meeting room (55 m²) for 50 guests in a theatre style setting, or a luncheon for 36 guests. Highlights include;

- Natural light
- Black out drapes
- Ceiling mounted data projector & screen

// the residence

A gracefully restored homestead creates a unique facility with interconnecting lounge/coffee area and meeting room - offering the flexibility of a day time boardroom space, an evening cocktail venue, or a private dinner venue. A truly exclusive venue, adjoined to The George by an enclosed walkway. Highlights include;

- Natural light
- Outdoor garden and courtyard access
- In-built gas fireplace
- Ceiling mounted data projector & screen



equipment

// venue hire charges (from 1/05/25)

venue	Half day	Full day
Parkview	\$690	\$1050
Parkview 1	\$485	\$550
Parkview 2	\$485	\$550
Treasury	\$485	\$550
Boardroom	\$485	\$550
Annex	\$345	\$410
Residence	\$550	\$690
Pescatore	\$550	\$690

Complimentary Wi-Fi is available in all meeting rooms.
All prices are inclusive of Government Goods and Services Tax (GST)
A 25% surcharge will apply to room hire for events occurring on a public holiday.
Non catered events will incur a 25% additional room hire fee.

// equipment charges

AV price list	
Data Projector	250.0
Flipchart	50.0
Screen only	50.0
Whiteboard	50.0
Laptop	250.0
Lecturn	60.0
Microphone – handheld	80.0
Microphone – lapel	80.0
Microphone & lecturn	120.0
Remote Mouse/Laser pointer	30.0
Video Conference unit	150.0
Smart Kapp 42"	150.0
Smart Kapp 65"	350.0
Plasma screen TV 50"	please ask our team
Staging	please ask our team
Mixing Desk	please ask our team

Prices listed are subject to change.
We are happy to provide quotations for additional equipment or theming not listed above.



contact us

For more information or to start planning your next event at The George, please contact;

E: daniel@thegeorge.com

T: 03 371 0255

W: thegeorge.com/events-weddings-special-occasions

Address: 50 Park Terrace, Christchurch

Location: located on the corner of Park Terrace and Peterborough Street, opposite Hagley Park, within walking distance of Christchurch CBD and a short drive to the Christchurch Airport.

The George is operated by Brook Serene & Company Ltd.

Brook Serene is a discerning curator of authentically local boutique hotels. Set in some of New Zealand's most beautiful locations, each hotel is absolutely one-of-a-kind.

Highly personalised service, tranquil ambience and rich local flavour are hallmarks of each property.

the george
christchurch

